

Memo

To: Trustee Maison
From: Robert Kosin
cc: Board of Trustee, Village President
Date: May 23, 2017
Re: CUSD 220 IGA

There is likely a presentation by representatives of CUSD 220 to the BOT on Tues 5/23 regarding the amendment of the original Wamberg/Barrington IGA as now that there are four lots own by the District.

For your reference, there is a map attached of the area with the municipal boundaries of Barrington and Barrington Hills delineated by a dashed line. CUSD owns Lot 4 in the Village of Barrington being the NW corner of New Hart and County Line.

In Barrington Hills, CUSD owns the Conservation Area (REIN 13-35-302-022 and 030). The District also owns within Barrington Hills, Lot 5 (REIN 13-35-302-029) and it's Zoning is the subject of discussion.

The property is within the Business Park Zoning District of Barrington Hills. A school use whether public or private is a Special Use and CUSD 220 as we understand their proposal is to amend the Zoning to permit a school use as a matter of right. Rather than the following Special Use,

5-6-4 E Special Uses, BP District: The following special uses may be allowed in the BP district, subject to the provisions of section 5-10-7 of this title:

* * *

Public and private schools.

There is proposed by CUSD 220 as a matter of right in the following

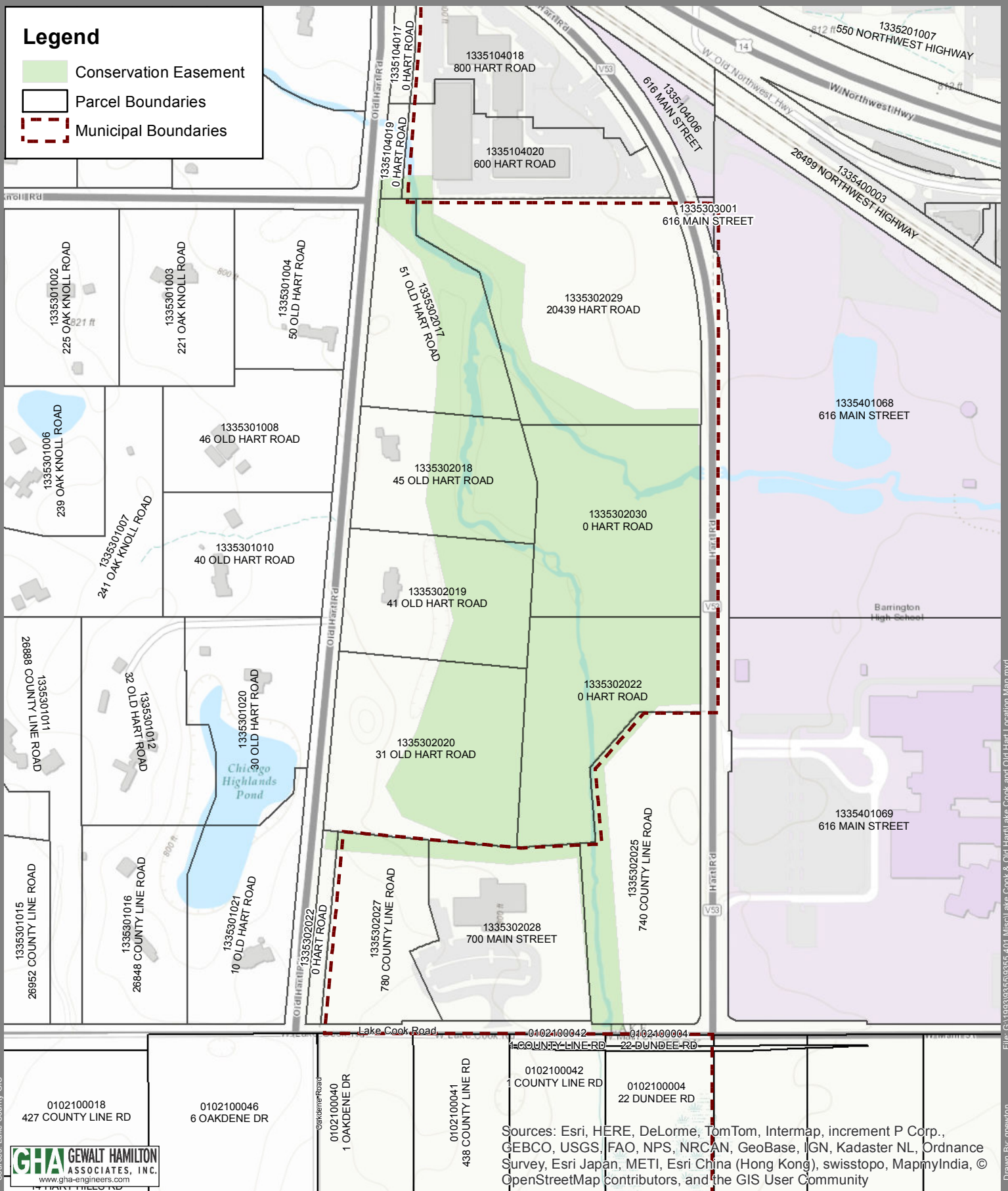
Elementary and high school uses and related facilities, including but not limited to, elementary, middle and high schools, parks and playgrounds, athletic fields and athletic facilities, school-related parking for school uses located on Lot 4 [Barrington] or lot 5 [Barrington Hills] (but not to include the storage of buses, trucks, maintenance vehicles, or commercial vehicles), and administrative offices, zoned in the Village Barrington Hills' Business Park Zoning District or in the Village of Barrington's PL (Public Lands) Zoning District.

The CUSD 220 is proposing approval of an amendment of the IGA which would begin as an item of consideration at the VBH BOT meeting of May 23rd.

The discussion could lead to initiating an amendment of the IGA.

Legend

- Conservation Easement
- Parcel Boundaries
- Municipal Boundaries



Sources: Esri, HERE, DeLorme, TomTom, Intermap, increment P Corp., GEBCO, USGS, FAO, NPS, NRCAN, GeoBase, IGN, Kadaster NL, Ordnance Survey, Esri Japan, METI, Esri China (Hong Kong), swisstopo, MapmyIndia, © OpenStreetMap contributors, and the GIS User Community



1 inch = 400 Feet

Lake Cook Rd & Old Hart Rd

Barrington/Barrington Hills, IL