



**Heritage & Environs Committee**  
**AGENDA & NOTICE OF MEETING**

Wednesday, April 19, 2017 ~ 3:00 pm  
112 Algonquin Road

1. Call to Order & Roll Call
2. Public Comments
3. [Vote] [Minutes March 15, 2017](#)
4. Old Business
  - 4.1 [Arbor day Activities 2018 - Cook County Forest Preserve Presentation](#)
  - 4.2 Arbor day 2017 Plantings
  - 4.3 [Village Monarch Way Station – coordinate / plan pick up and planting](#)
  - 4.4 Scavenger Lid Ordinance Update
  - 4.5 Painting / Deck the Walls Updates
  - 4.6 [Promote April 22, 2017 Roadside Cleanup](#)
  - 4.7 VBH Promotion
  - 4.8 Spring Landscape Plans
5. New Business
  - 5.1 HEC Time and Date Survey
  - 5.2 New Project Suggestions
6. Adjournment

Chairman: Neil Fern

**NOTICE AS POSTED**

VILLAGE OF BARRINGTON HILLS HERITAGE & ENVIRONS COMMITTEE (“HEC”)  
Meeting Minutes March 15, 2017

**Call to Order:**

Donato Cantalupo called the meeting to order at 3:10 PM.

**Roll Call:**

Members Present: Lorraine Briggs, Danato Cantalupo, Suzy Mogler, Liz Olsen-Wolfgram, Erin Vondra and Robin VanCastle

Members Absent: Neil Fern, Daniel Mjolsness and Johanna Svenson-Croll

Liaisons Present: Sgt. Kann

Liaisons Absent: Bob Kosin, Anna Paul and Fritz Gohl

**Request for Public Comments:**

There were no public comments made.

**Approval of Minutes:**

Don asked for approval of the minutes for the February 15, 2017 meeting. Suzy made the motion to approve and the minutes were unanimously approved by the committee members.

**Scavenger Lid Ordinance Update:**

Don reported that the proposed lid ordinance did not go to the Trustees. Robin suggested that the ordinance may be more acceptable if it were less prescriptive. Rather than specify that all trash be in a hinged container, the ordinance could simply prohibit a method that did not adequately contain the trash from animals and wind. Liz agreed that there are other methods that can secure trash to achieve the committee’s goal of reducing road-side trash.

**Painting & Deck the Walls:**

The committee discussed the progress of the painting, noting that the McArthur room is currently being painted.

**VBH Promotion:**

The members discussed the Village’s new web site. Lorraine suggested that the property freedoms verbiage was too broad. She recommended that it be added that permits are required for such activities as fireworks and shooting ranges. Erin suggested that there be section specifically for real estate brokers.

VILLAGE OF BARRINGTON HILLS HERITAGE & ENVIRONS COMMITTEE (“HEC”)  
Meeting Minutes March 15, 2017

**Monarch Way Station:**

The committee was informed the grant has been approved for the butterfly way station kits. Lorraine reported that she had researched butterfly houses and found that it was not used by the butterflies. Danato reported that the cost for a butterfly house was \$200 - \$300. The committee agreed that no butterfly house would be approved until the benefits were clearly determined.

**Spring Landscaping:**

Liz deferred her report because the snow prevented her from evaluating the Village property to make her recommendations.

**Arbor Day 2018:**

Liz reported on her meeting with Barrington Area Conservation Trust (BACT) to partner with the Village in sponsoring the planting 1,000 trees in April 2018. BACT has agreed to help sponsor the program. The trees are free from Metropolitan Water Reclamation District of Greater Chicago (MWRD). The committee agreed that the scope of the project requires having a detailed plan no later than mid-October 2017 to be ready by April 2018.

**New Business:**

Dan reported that the Village sign is in very poor condition. The posts have rotted completely. He stated that the Village President is looking for input on the design of a new sign.

**Next Committee Meeting:**

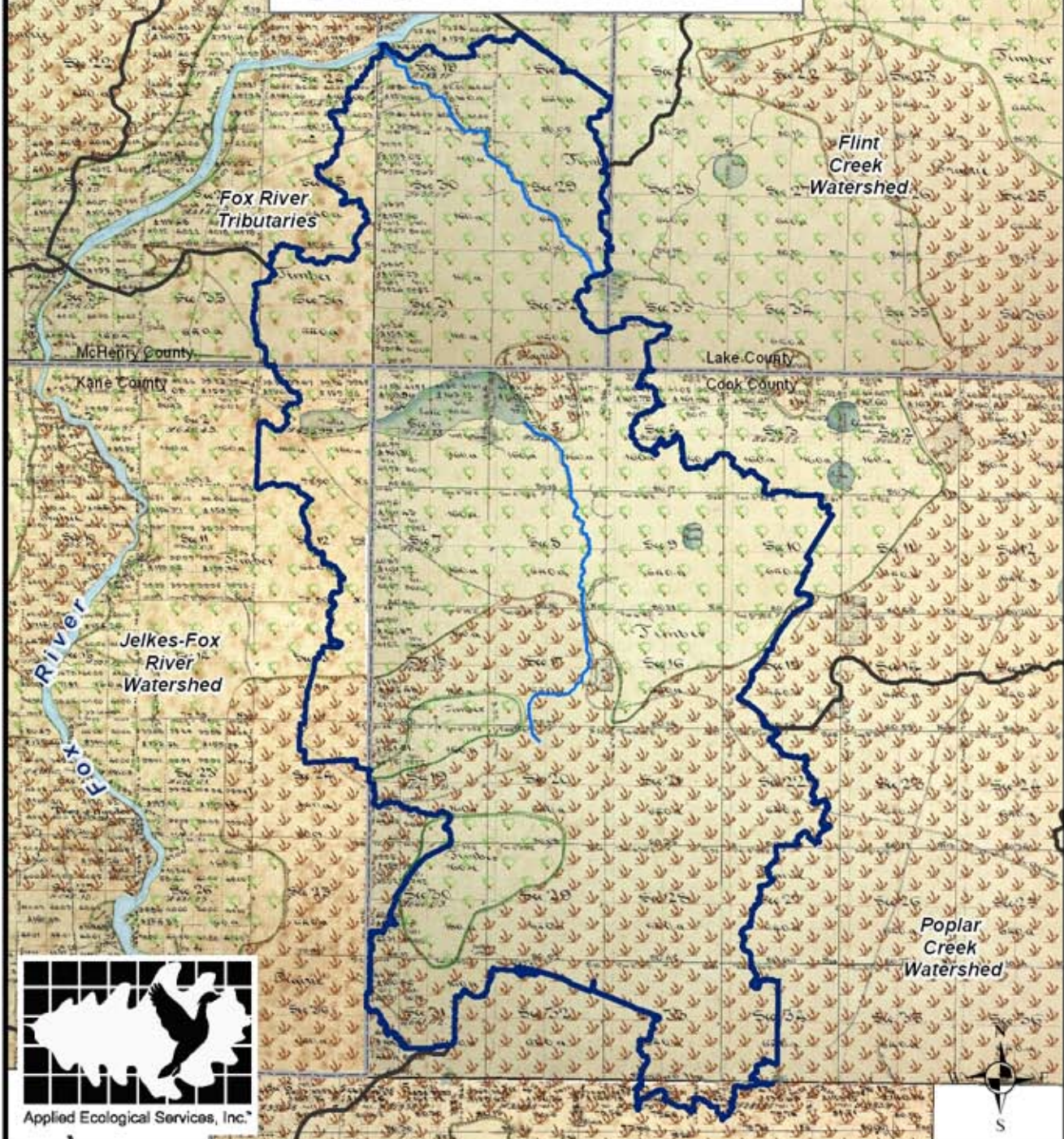
The next meeting is scheduled for Wednesday, April 19, 2017 at 3:00PM. Liz noted that the current meeting time is not possible for one of the committee members. The committee agreed to survey the members to identify a more convenient time for all members if possible. Robin volunteered to put a survey out to members about meeting times and days.

**Adjournment:**

The meeting was adjourned at 4:45 PM by unanimous vote of the members.

Respectfully submitted, Robin VanCastle

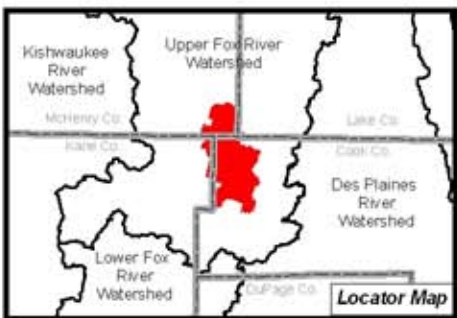
# Spring Creek Watershed



Applied Ecological Services, Inc.\*

DATA SOURCES Barrington Area Council of Governments  
 Cowart Hamilton Associates, Inc.  
 U.S. Geological Survey  
 Illinois State Archives

**Fig. #: Pre-European Settlement Vegetation**



## Legend

- Rivers & Streams
- County Boundary
- Adjacent Watershed
- Spring Creek Watershed

## Pre-European Settlement Vegetation (1830's)

- Prairie
- Timber (Oak Savanna)

0 3,500 7,000 14,000 Feet

## Exciting News!!

***We are creating a Monarch corridor in Barrington thanks to your help and grant funding!***



***Thank you for your interest and commitment in helping create monarch butterfly habitat as part of our BACT's monarch butterfly corridor project.***

***We are very excited to announce that through a grant which the Barrington Area Conservation Trust wrote and received from the Barrington Area Community Foundation you will be receiving the following supplies to create a monarch waystation at your location. We are creating a mosaic of monarch habitat in our community to help with this regional and national effort!***

***- 50 one gallon sized plants (See attached examples of garden designs for plants listings. These are only example designs. Some organizations are incorporating the plants into existing beds or even planting in existing raised beds. Only requirements are at least 6 hours of sunlight and no pesticide use on the plants themselves. You agree to plant and maintain the garden.) Just an FYI - we might be switching out one of swamp milkweed for a pint or two of common milkweed. I have attached detailed bed preparation instructions as well.***

- Six bags of 25 LB Moo- Nure***
- Six bags of 2 CU Ft. Scotts Earthgro Brown Mulch***
- Interpretive sign and green u-channel post***
- Informational brochures for your distribution***

***We are asking each garden recipient to pick up the above materials from the Cuba Township Village Hall on May 16th from 11am - 3pm. 28000 W Cuba Rd, Barrington, IL 60010 I will be there all day. On the day of delivery, if you have any questions you can contact me on my cell #847-542-4758. Prior to that please let me know if you have any question regarding planting or locations. You can reach me via cell or email. Please reply to this email by April 15th to confirm that you will pick up your materials on the specified date and time. Additionally, provide me with the name and cell phone number of a person to contact on day of delivery if needed. We will be out there with the plants rain or shine (hoping for the later!)***

***If any of your residents are interested in purchasing a waystation for their yard, please direct them to our website, [www.bactrust.org](http://www.bactrust.org) and click on Monarch Mania. A limited number of gardens are available for purchase.***

Kind Regards,

Susan Lenz  
Director of Community Engagement  
847-542-4758  
[bactrust.org](http://bactrust.org)



### Monarchs need our help and we need monarchs!

Thank you for planting a monarch waystation at your location. With your help we are increasing monarch habitat in our community! **MARK YOUR CALENDAR TO PICK UP YOUR PLANTS ON MAY 16<sup>TH</sup> BETWEEN THE HOURS OF 11AM – 3PM AT CUBA TOWNSHIP VILLAGE HALL 28000 W Cuba Rd, Barrington**



#### Preparation for your waystation:

Each organization's garden bed's requirement is a little bit different thus the following are just some suggestions:

When preparing your garden bed please remember that when you pick up your 50 one gallon sized plants, we will also be providing you with:

- Six bags - 25 LB Moo- Nure
- Six bags - 2 CU Ft. Scotts Earthgro Brown Mulch
- Interpretive sign and post (The sign is on a green u-channel post. We can help install if needed. Just let us know. )

\*\*Contact J.U.L.I.E. to mark off the underground utilities before you dig to avoid any underground utility lines. <http://www.illinois1call.com>

**We need before and after photos for our grant reporting.** Please take a picture of your site and email it to [susan@bactrust.org](mailto:susan@bactrust.org) before starting to dig/plant your garden. Additionally, please take a picture of your site after planting your garden. We truly appreciate it!

#### INSTRUCTIONS FOR GARDEN BED PREPARATION AND INSTALLATION

- Simply form the garden bed by removing the turf and top dress with an inch of quality compost. First spray paint or mark off an outline for your garden. If you feel you need to build the soil up to a higher level, incorporate a few more bags of compost into your bed. Remember we will be providing you with six 25 LB bags of Moo- Nure when you pick up your plants.

The garden bed needs to be 100 sq feet and should be in a location that receives approximately 6 hours or more of sunlight.

You can utilize the attached garden plans or incorporate the garden into your existing garden beds.

If you have turf the following are some suggestions:

Kill the grass by any of the following options:

- a. Spray the grass with Roundup
- b. Smother grass with black plastic, newspaper, or cardboard. (This will take a month or so to work.)
- c. Remove with a sod cutter.

Turn over the soil. You can do this with a shovel.

If you feel you need to build the soil up to a higher level, incorporate a few more bags of compost into your bed.

### After receiving your plants on May 16<sup>th</sup>:

- Lay out the plant material while still in their one gallon pots. This will be a dense planting, so do not be concerned if spacing seems tight.
- Once the plants are laid out to your liking, pull the plants from the one gallon containers and gently break up the roots before placing in the ground. Gently tuck in soil around the plants to fill any air gaps.
- Mulch the new planting bed with 1-2" of mulch, but keep the mulch away from the base of all plant material. This is to retain moisture and suppress weeds as the plants get established in the first year. Excess wood mulch around the base of perennials causes overheating, and rotting of the plants essential crown. Mulch will not be necessary in subsequent years.
- Water in the new plant material by targeting all plants, but also getting good coverage on the garden as a whole (think rain!) Before watering, feel the soil under the mulch to determine need and frequency. A wrung out sponge is a good benchmark for ideal moisture levels.
- Use a dutch hoe to routinely knock down weeds as they emerge throughout the season.
- Leave the dry/dead plant stems and flower heads up all winter, and cut back each spring. Finely chop all the debris and keep in the garden as a mulch/organic material layer!
- No additional inputs (fertilizers) will be required moving forward.
- Routine watering especially during dry spells during the summer is recommended.
- It is important to be pesticide free since this garden is wildlife food. Since these are all native plants, little maintenance is required other than watering and control of weeds.

### **By year three, you'll have a monarch masterpiece on your hands!**

\*\* We are always looking for milkweed seeds for our preserves and to spread habitat in our area. If you are interested, in the fall, pick the milkweed seed pods when they first start to burst and either drop them off at BACT's office on the second floor of the White House in town (145 West Main Street) or give me a call.

Any questions please contact Susan at [susan@bactrust.org](mailto:susan@bactrust.org) or 847-387-3149. Need help in planting – contact us as we have a great native landscaper, Ringers Landscaping, who can visit your site and give you a quote.

# Monarch Waystation Planting Plan

6-8' width



15-20' length



-  Wild Blue Indigo - 1
-  Swamp Milkweed - 7
-  Little Bluestem - 2
-  Butterfly Weed - 5
-  Pale Purple Coneflower - 9
-  Joe Pye Weed - 3
-  Rattlesnake Master - 3
-  Prairie Dropseed - 5
-  Black-Eyed Susan - 3
-  Wild Bergamot - 3
-  Prairie Blazing Star - 6
-  Mountain Mint - 3

Design & artwork provided by:

**ringers**  
LANDSCAPE SERVICES, INC.

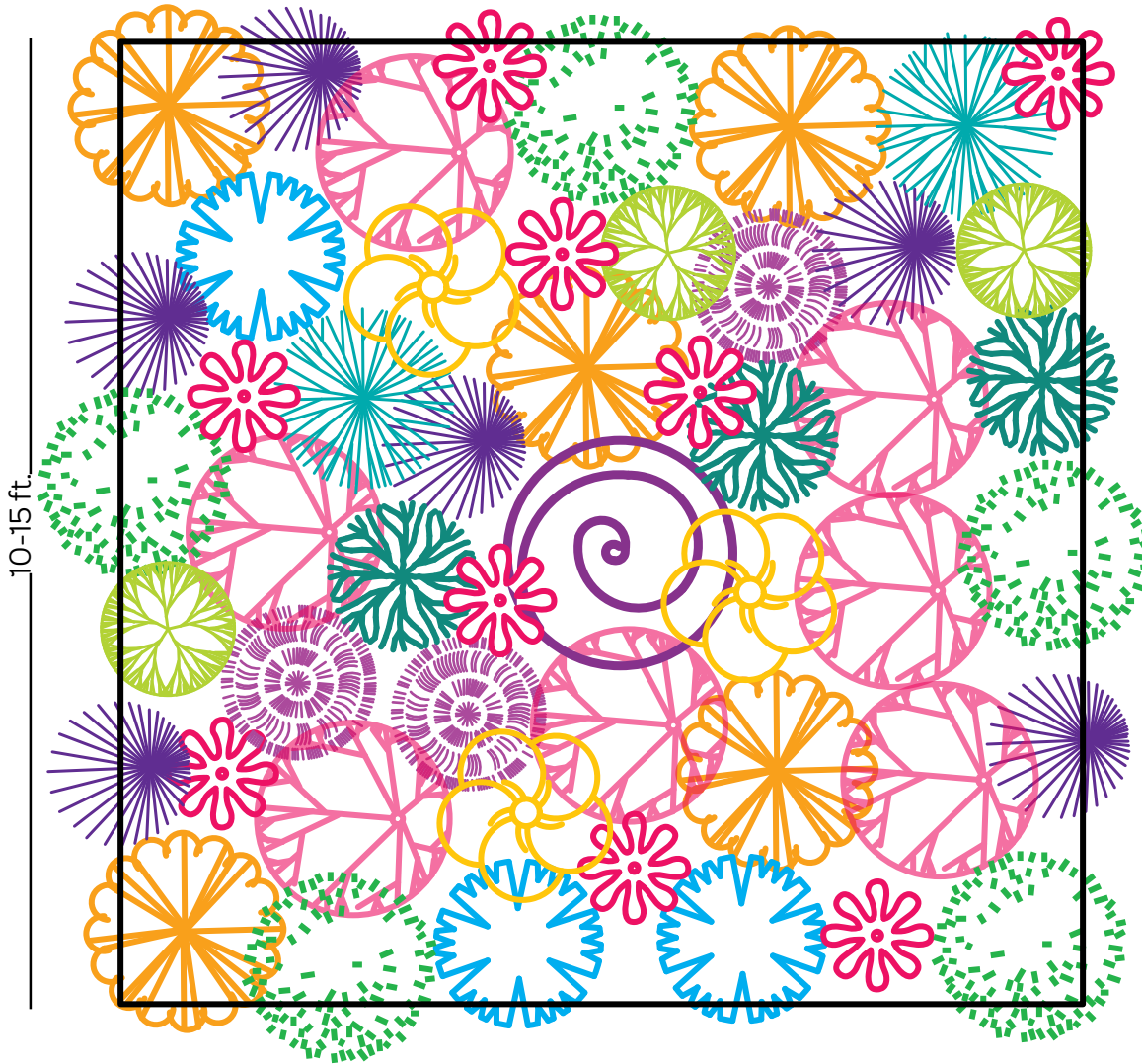
*\*Garden should be located in full sun (6-8 hrs)*





# Monarch Waystation Planting Plan

10-15 ft.



Wild Blue Indigo - 1



Swamp Milkweed - 7



Little Bluestem - 2



Butterfly Weed - 5



Pale Purple Coneflower - 9



Joe Pye Weed - 3



Rattlesnake Master - 3



Prairie Dropseed - 5



Black-Eyed Susan - 3



Wild Bergamot - 3



Prairie Blazing Star - 6



Mountain Mint - 3

Design & artwork provided by:



\*Garden should be located in full sun (6-8 hrs)

# Create your own Monarch Waystation!



## Plants in the Garden

**A** - Swamp Milkweed *Asclepias incarnata*

**B** - Butterfly Weed *Asclepias tuberosa*

**C** - Wild Blue Indigo *Baptisia australis*

**D** - Pale Purple Coneflower *Echinacea pallida*

**E** - Joe Pye Weed *Eupatorium purpureum*

**F** - Prairie Blazing Star *Liatris pycnostachya*

**G** - Wild Bergamot *Monarda fistulosa*

**H** - Showy Black-eyed Susan *Rudebeckia fulgida var. speciosa*

**I** - Prairie Dropseed *Sporobolus heterolepis*

**J** - Little Bluestem *Schizachyrium scoparium*

**K** - Mountain Mint *Pycnanthemum virginianum*

**L** - Rattlesnake Master *Eryngium yuccifolium*

Artwork provided by:

**ringers**  
LANDSCAPE SERVICES, INC.