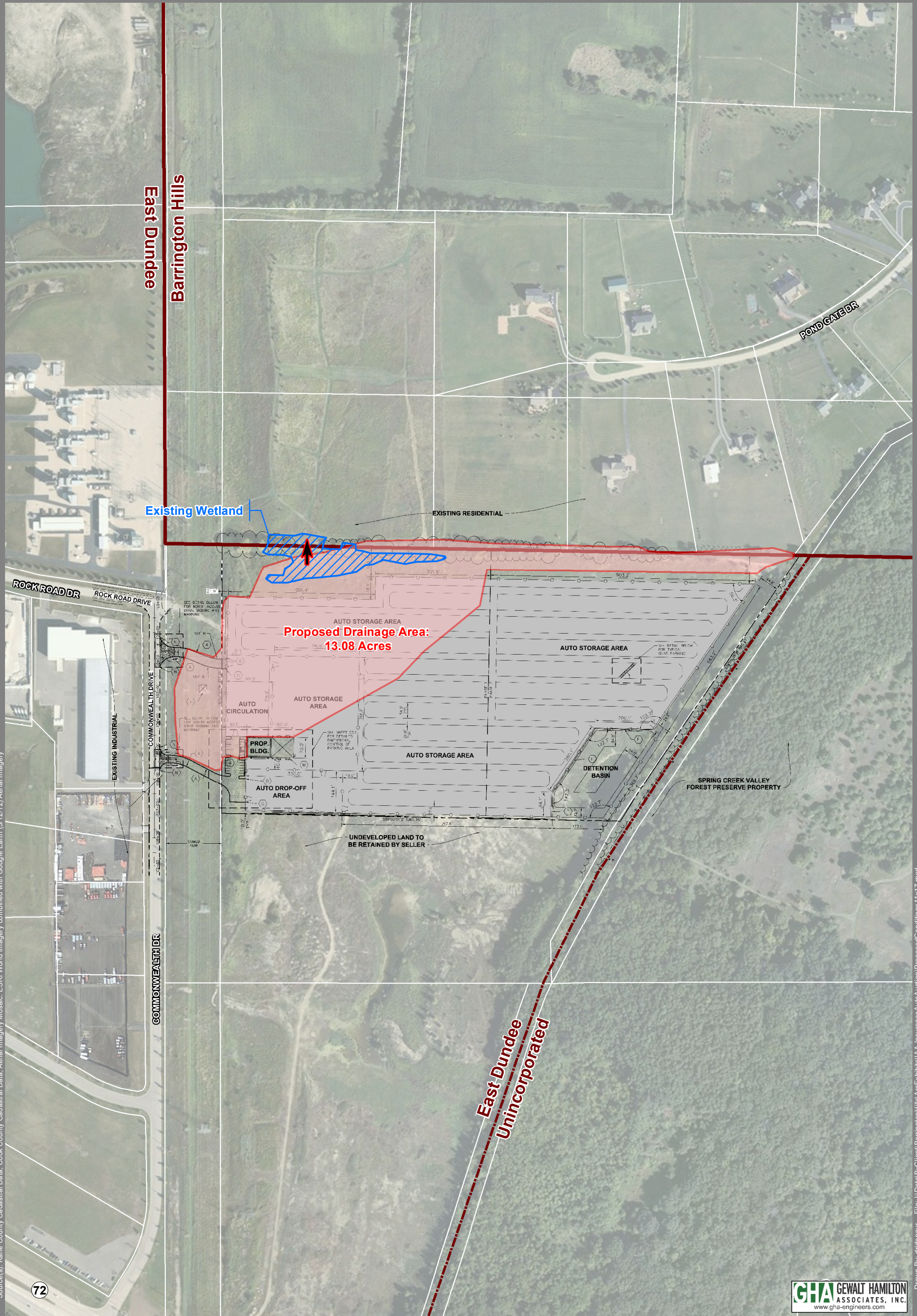


Source(s): Kane County Cadastral Data, Cook County Cadastral Data, Aerial Imagery Mosaic, ESRI World Imagery combined with Google Earth (3/12/12) Aerial Imagery



**East Dundee
Unincorporated**

72



1 inch = 300
Feet



Proposed Conditions

Insurance Auto Auction

Drawn By: dridenour File: I:\Data\BYClient\BarringtonHills\Arc\Exhibits\AA-InsuranceAutoAuction\ProposedConditions 11x17.mxd